

## 10. Founder's Annex Classroom



*Detail of Don Quixote tiles.*

The exterior of Founder's Annex is decorated with a set of hand painted tiles that tell the story of Don Quixote. The building has historical significance because of the tiles and because it is an integral part of Founder's Hall.

The interior of the former 3-car garage has no historic value, and can be gutted to allow a new 570 sq. ft. classroom. By incorporating the current attic space, the classroom can have a sloped ceiling as well as high windows (glass block?) bringing in light from the meditation garden. The historic roof of the building will be preserved. The existing office doors and windows are not original and can be replaced with doors and windows that will be more suitable for a classroom.

A trellis is suggested over the entry doors to the classroom.

The other office in the Annex has a higher floor level than the classroom. It could be used as a small seminar room or as a small "store" for essential items for students who live on campus.



*Above: Founder's Annex. Lower tiled roof area would become a classroom. White wall above the roof is the wall of the Meditation Garden.*

*Right: Existing attic space above Founder's Annex could be incorporated into the classroom space to create more volume. Vertical wall on the right is the edge of the Meditation Garden..*

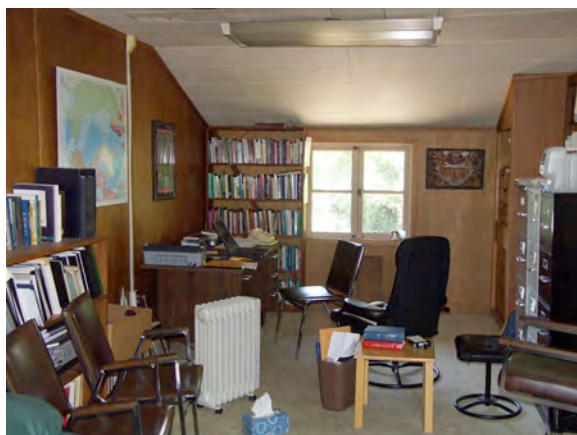


## 11. Move Maintenance

As a result of the Giesy remodel, Sawyer Annex will no longer be needed for faculty offices. In the short term, Sawyer Annex could house the maintenance offices and workshop, so that the workshop could move out of Beasom. In the future, if new offices are provided elsewhere for the maintenance department, Sawyer Annex could be used as 6 additional guest rooms to expand the Guest Center or as two student apartments or as an additional classroom.

The maintenance department handles materials with noticeable odors, such as pesticides and paints, as well as using somewhat noisy shop equipment, which makes their current location in the lower level of the Beasom dormitory inappropriate. Their space should include a workshop as well as office space where maintenance personnel receive their daily assignments and plans of the buildings can be stored. A shower and lockers should be provided for maintenance staff. Storage is needed for supplies, yard supplies (mulch, etc.), furniture in need of repair, construction materials, etc.

The existing lower level of the Sawyer Annex could be converted to a shop area by the maintenance staff. The upper level could be used as the maintenance office and storage.



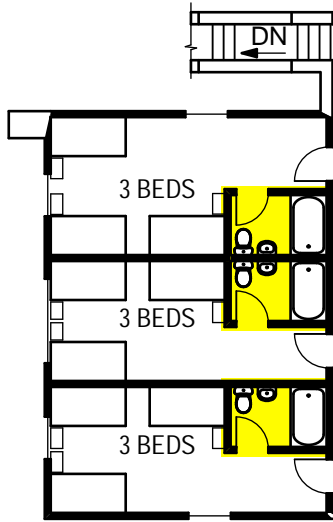
*Sawyer Annex second floor interior.*



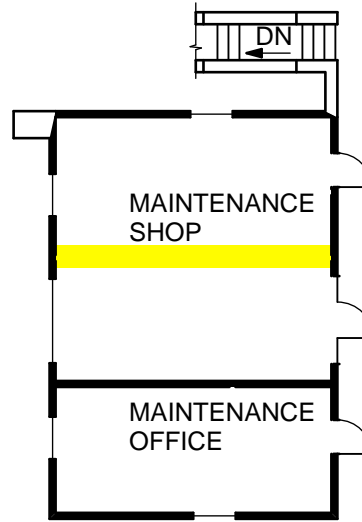
*Sawyer Annex exterior.*



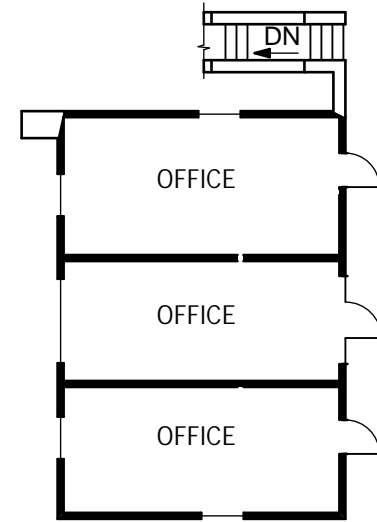
*Current maintenance shop in the basement of Beasom could become a 4-BR apartment.*



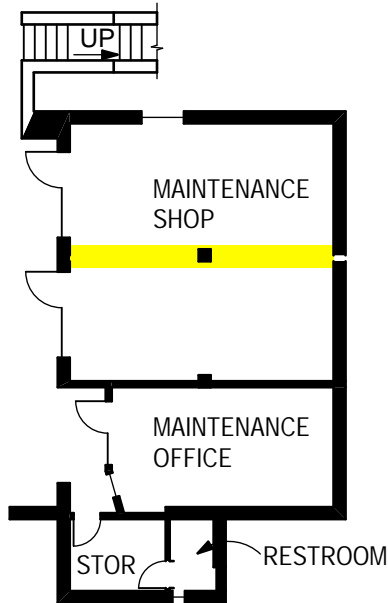
OPTION 2 - UPPER  
SCALE: 1/16" = 1'-0"



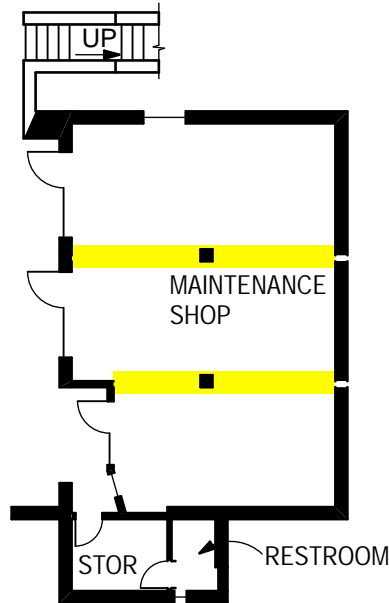
OPTION 1 - UPPER  
SCALE: 1/16" = 1'-0"



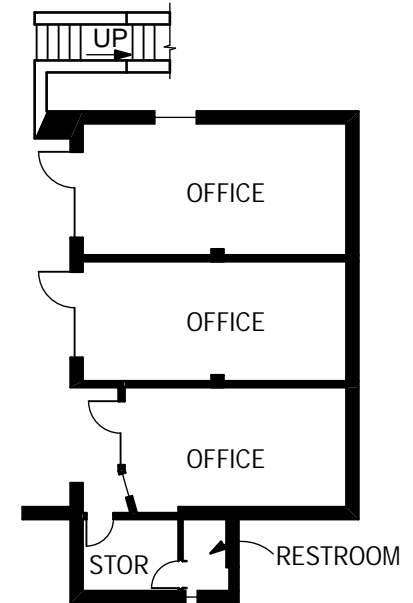
SAWYER ANNEX - UPPER  
SCALE: 1/16" = 1'-0"



OPTION 2 - LOWER  
SCALE: 1/16" = 1'-0"



OPTION 1 - LOWER  
SCALE: 1/16" = 1'-0"



SAWYER ANNEX - LOWER  
SCALE: 1/16" = 1'-0"