

Living in Berkeley:

# PLTS Delaware Apartments

## **An introduction to The Dels!**

The Delaware Street apartment complex is PLTS' privately owned off-campus housing option, consisting of 42 single and double bedroom units. The 1950's set of buildings is located on 1300 Delaware Street, conveniently located next to the North Berkeley BART (subway) station and near the UC Berkeley campus. The PLTS Looper makes daily runs between the Del's, UC Berkeley/GTU, and the PLTS campus.

## **RENT:**

Rental prices for the 2008 to 2009 academic year, effective from July 1, 2008, are given below. All rent is payable through your student account.

One bedroom apartment downtown, Non-refurbished, Unfurnished	\$810/month
One bedroom apartment downtown, Refurbished, Unfurnished	\$900/month
One bedroom apartment downtown, Refurbished, Furnished	\$950/month
Two bedroom apartment downtown, Non-refurbished, Unfurnished	\$930/month
Two bedroom apartment downtown, Refurbished, Unfurnished	\$1030/month

"Refurbished" generally refers to upgraded flooring and fixtures.

A \$600 security and cleaning deposit for a two-bedroom or a \$500 deposit for a one-bedroom is due before move-in.

## **UTILITIES:**

Upon move-in, each tenant is expected to contact PG&E to set up your own account. Average monthly gas and electric costs vary.

*Water, sewage, and garbage pick-up are included in your monthly rent.*

## **APARTMENT LAYOUT:** (see blueprints)

Each apartment is equipped with a full-sized refrigerator, small oven, and standard bathroom. Furnished apartments include a table and chairs, couch, and bed.

## **FAMILIES AND CHILDREN:**

are quite welcome at the Dels! Many 2-bedroom apartments are occupied with families and children of all ages. There is a playground for your use in the courtyard of the apartment complex and room to store your children's bikes, too. The Dels are within walking distance of an elementary and middle school, and within subway distance of Berkeley High School. There are also several playgrounds in the neighborhood and designated bike paths.

## **INTERNET, PHONES, TV:**

Monthly rent does not include these amenities, though you may set up your own account with a local cable or phone company on your own.

## **PARKING:**

You are welcome to bring your car(s) with you to PLTS and will be assigned a space within the apartment property upon availability. PLTS is not liable for lost or stolen items in cars while in our parking lots. We recommend taking standard precautions upon parking and leaving your car as you would anywhere else. Remember to update your car insurance, lock the doors when you are away, and hide any visible objects. Parking in Berkeley and the Bay Area in general is a headache, so don't be afraid to make use of public transportation and the Looper (our seminarian van that transports students between PLTS, the GTU, and the Delaware Apartments). Refer to the Student Handbook for schedules and further procedures.

## **STORAGE:**

Each tenant is allotted a storage closet located on the apartment property, in addition to indoor locked bike space. Two bedroom units are allotted two storage closets.

**LAUNDRY:**

There is a laundry room on the first floor of the apartment unit for occupant use. Each load is \$1. The machines only take quarters, so bring your own since we do not have a quarter machine!

**KEYS:**

Upon arrival, you will be given a set of keys from the residential manager. These will give you access to your front door and mailbox.

**RESIDENTIAL MANAGER:**

The Residential Manager is responsible for the day-to-day operations of the apartment and the residents' adherence to seminary policies, and is usually also a PLTS student. The manager assigns parking spaces, keys, and storage spaces. He/she is your first point of contact for problems relating to apartment life. PLTS also has a maintenance crew which will respond to maintenance needs. For any other problems, see the Facilities Coordinator. Maintenance request forms are available through the PLTS website.

**PETS:**

Strictly no pets, though you may have a fish or two.

BEASOM HALL ALSO OFFERS THE FOLLOWING TO DELAWARE RESIDENTS:

**WORKOUT ROOM:**

We are pleased to announce the opening of a new workout room in Beasom Hall on the PLTS campus! This new opportunity is located in room 108 and is open to all PLTS students and staff (this includes those living in the Dels). The room hosts a treadmill, a TotalGym, dumbbells, mats, medicine balls, and an abs machine. The workout room will be open to non-Beasom students from 7am to 10pm. Rules and procedures are distributed at the beginning of each school year.

**STUDY LOUNGE:**

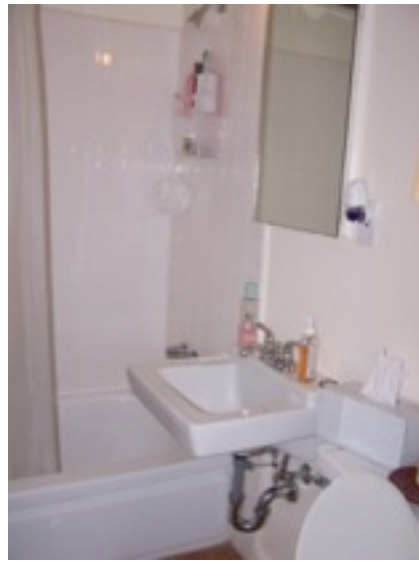
In addition to a new workout room, we are also pleased to announce a new study lounge in Beasom Hall, equipped with several lounge chairs, desks, and tables, as well as a small reference library! The former dorm room is now available for student meetings and study sessions to any PLTS student or staff.



A second-story view of the Delaware Apartments east wing and courtyard.



A northern view of the Delaware Apartment entrance



A typical one-bedroom kitchen and bath



A side-view of the Delaware Apartments from the bordering bike trail.